



India Meteorological Department
Earth System Science Organisation
(Ministry of Earth Sciences)

BULLETIN NO.: 43 (BAY OF BENGAL 01/2020)

TIME OF ISSUE: 1430 HOURS IST

DATED: 21.05.2020

FROM: INDIA METEOR

OLOGICAL DEPARTMENT (FAX NO. 24643965/24699216/24623220)

TO: CONTROL ROOM, NDM, MINISTRY OF HOME AFFAIRS (FAX.NO. 23093750)

CONTROL ROOM NDMA (FAX.NO. 26701729)

CABINET SECRETARIAT (FAX.NO.23012284, 23018638)

PS TO HON'BLE MINISTER FOR S & T AND EARTH SCIENCES (FAX NO.23316745)

SECRETARY, MOES, (FAX NO. 24629777)

H.Q. (INTEGRATED DEFENCE STAFF AND CDS) (FAX NO. 23005137/23005147)

DIRECTOR GENERAL, DOORDARSHAN (23385843)

DIRECTOR GENERAL, AIR (23421105, 23421219)

PIB MOES (FAX NO. 23389042)

UNI (FAX NO. 23355841)

D.G. NATIONAL DISASTER RESPONSE FORCE (NDRF) (FAX NO. 26105912, 2436 3260)

DIRECTOR, PUNCTUALITY, INDIAN RAILWAYS (FAX NO. 23388503)

CHIEF SECRETARY, WEST BENGAL (FAX NO. 033-22144328)

CHIEF SECRETARY, GOVT. OF ODISHA (FAX NO. 0674 -2536660)

CHIEF SECRETARY, GOVT. OF ASSAM (FAX NO. 0361-2237200)

CHIEF SECRETARY, GOVT. OF MEGHALAYA (FAX NO. 0364 - 2225978)

CHIEF SECRETARY, GOVT. OF SIKKIM (FAX NO. 03592 -204323)

Sub: Super Cyclonic Storm 'AMPHAN' (pronounced as UM-PUN) lay as a Deep Depression over Bangladesh

The Super Cyclonic Storm 'AMPHAN' (pronounced as **UM-PUN**) moved north-northeastwards as a Cyclonic Storm with a speed of 06 kmph during past 06 hours, further weakened into a **Deep Depression** and lay centered at 1130 hrs IST of today, the 21st May 2020 over **Bangladesh** near Lat. 25.0°N and Long. 89.6°E about 300 km east-northeast of Kolkata, 110 km south-southeast of Dhubri and 80 km south-southeast of Rangpur (Bangladesh).

It is very likely to continue to move north-northeastwards and weaken further into a Depression during next 06 hours and further into a well marked low thereafter.

Forecast track and intensity are given in the following table:

Date/Time(IST)	Position (Lat. °N/ long. °E)	Maximum sustained surface wind speed (Kmph)	Category of cyclonic disturbance
21.05.20/1130	25.0/89.6	50-60 gusting to 70	Deep Depression
21.05.20/1730	26.2/90.3	30-40 gusting to 50	Depression

(1) Heavy rainfall Warning:

Assam & Meghalaya: Light to moderate rainfall at most places with heavy to very heavy & **extremely heavy falls (≥20 cm)** at isolated places very likely on 21st May, 2020.

Arunachal Pradesh: Light to moderate rainfall at most places with heavy to very heavy falls at isolated places very likely on 21st May, 2020.

(2) Wind warning

Squally wind speed reaching 50 to 60 kmph gusting to 70 kmph very likely over Western Assam & Western Meghalaya till evening and reduce gradually thereafter.

Spatial rainfall distribution: Isolated: <25%, A few: 26-50%, Many: 51-75%, Most: 76-100%

Rainfall amount (mm): Heavy rain: 64.5 – 115.5, Very heavy rain: 115.6 – 204.4, Extremely heavy rain: 204.5 or more.

(3) Realised weather over West Bengal

- **Maximum sustained wind speed recorded:**

Kolkata (Dum Dum) reported **130 kmph at 1855 hrs IST** and Kolkata (Alipore) **112 kmph at 1752 hrs IST of 20th May**.

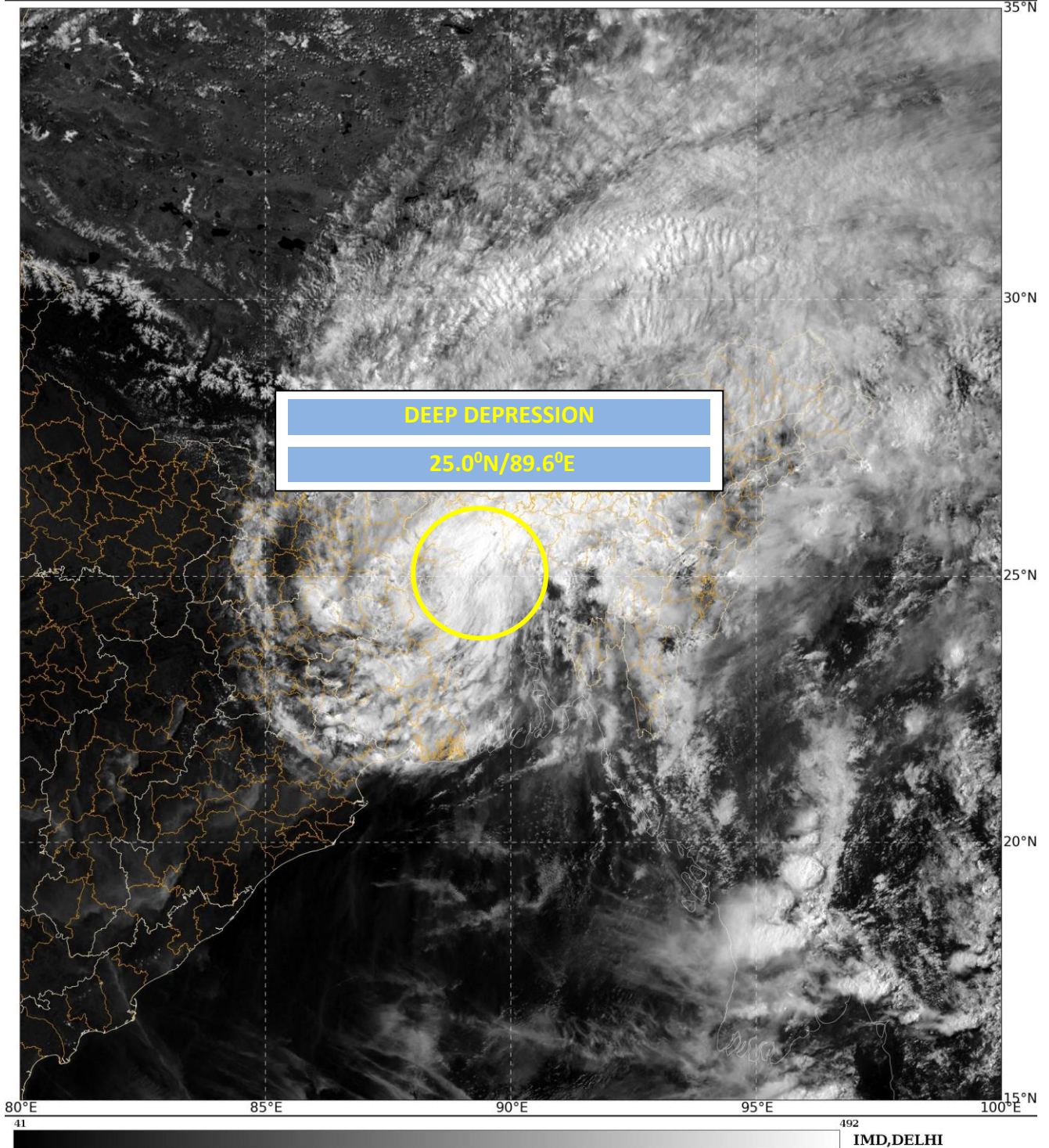
- The chief amounts of rainfall (in cm) realised on 20th May are: Alipore-24, DumDum-20 and Haldia-8.

Kindly visit www.rsmcnewdelhi.imd.gov.in and www.mausam.imd.gov.in for updates on the system.

Next Bulletin will be issued at 2030 hours IST of today, the 21st May, 2020.

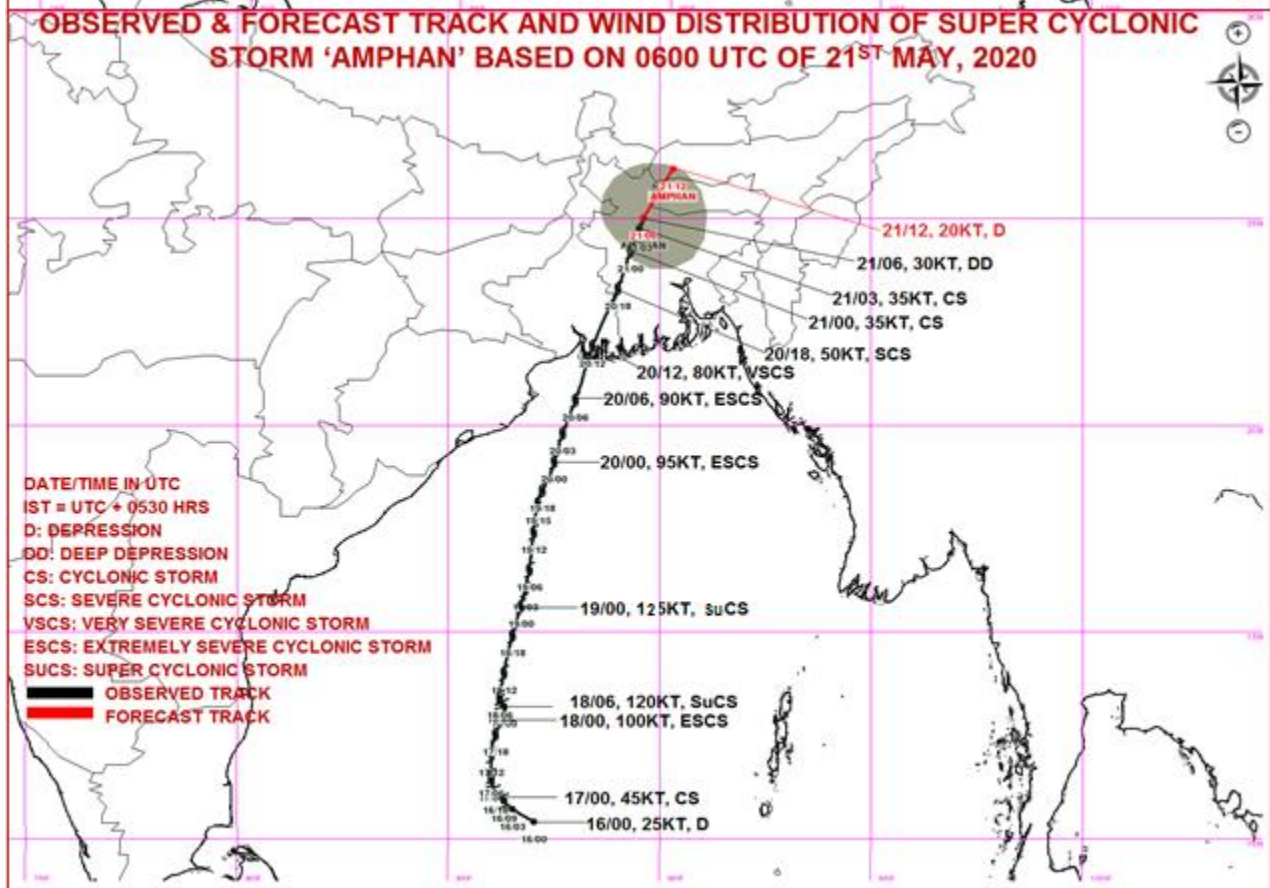
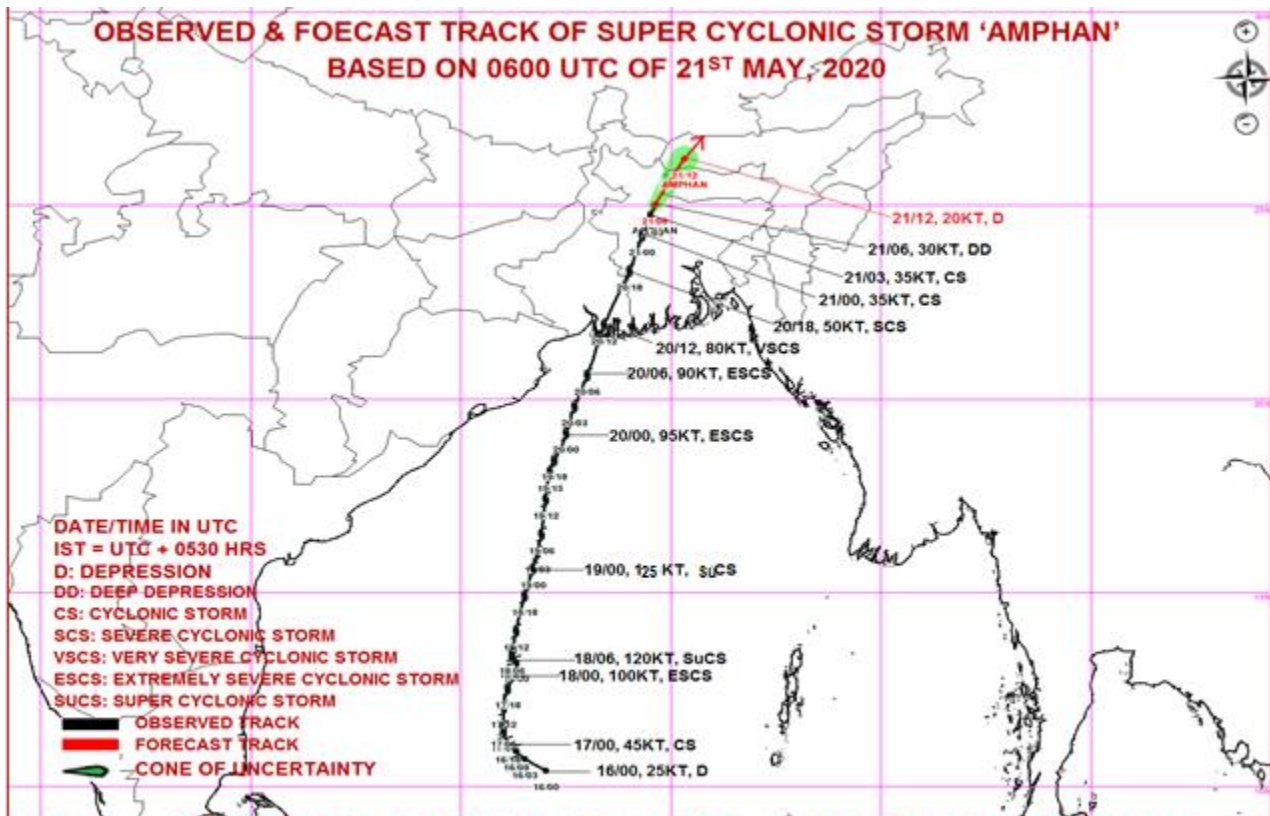
(Naresh Kumar)
Scientist-E, RSMC, New Delhi

Copy to: RMC Guwahati/ ACWC Kolkata



**Legend: WCB – Westcentral Bay of Bengal
NWB – Northwest Bay of Bengal**

Spatial rainfall distribution: Isolated: <25%, A few: 26-50%, Many: 51-75%, Most: 76-100%
Rainfall amount (mm): Heavy rain: 64.5 – 115.5, Very heavy rain: 115.6 – 204.4, Extremely heavy rain: 204.5 or more.



Spatial rainfall distribution: Isolated: <25%, A few: 26-50%, Many: 51-75%, Most: 76-100%
Rainfall amount (mm): Heavy rain: 64.5 – 115.5, Very heavy rain: 115.6 – 204.4, Extremely heavy rain: 204.5 or more.